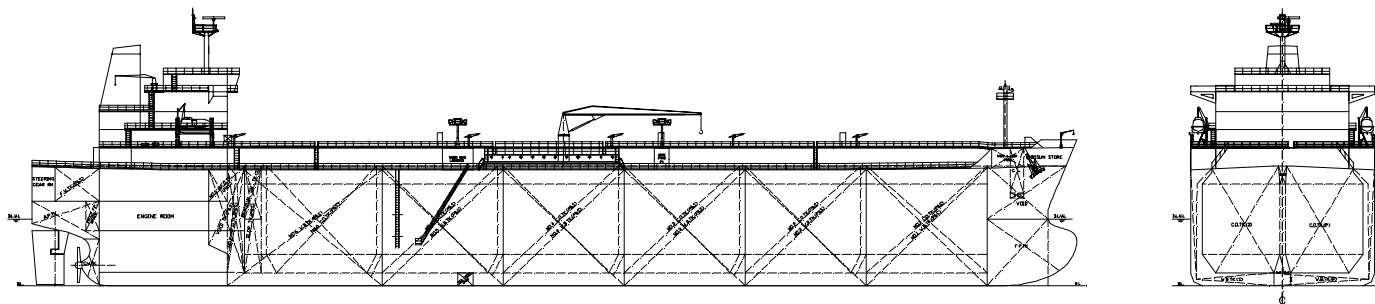


# 52,000 DWT CLASS PRODUCT AND CHEMICAL TANKER ( HULL NO. 2145 ~ 2152)



**HYUNDAI MIPO  
DOCKYARD CO., LTD.**



### MAIN DIMENSIONS

Length over all	abt.	183	m
Length between perp.		174.0	m
Breadth moulded		32.2	m
Depth moulded		19.1	m
Draught design (Td)		11.0	m
Draught scantling(Ts)		13.3	m

### COMPLEMENT

29 + 6 p

### MAIN ENGINE

HYUNDAI - B & W	6S50MC-C
MCR	9,480 kW x 127 RPM
NCR	8,530 kW x 122.6 RPM

### WATER BALLAST PUMP

Type	Hyd. Driven Submerged.
Capacity	900 m <sup>3</sup> /h x 2 sets

### AUXILIARY BOILER

Capacity	18,000 kg/h x 1 set
----------	---------------------

### DEADWEIGHT

Deadweight on Td	abt.	39,950	MT
Deadweight on Ts	abt.	51,950	MT

### SERVICE SPEED

Service Speed at NCR on Td	abt.	15.2	kts
Sea margin		15	%

### POWER SUPPLY

Diesel Generators	730 kW x 3 sets
Emergency Generator	120 kW x 1 set

### CLASSIFICATIONS

Class LR, +100A1,  
Double Hull Oil and Chemical Tanker,  
Ship Type 3, CSR, ESP, \*IWS, LI,  
+LMC, UMS with the descriptive note:  
COW, ETA, Part Higher Tensile Steel,  
ShipRight(SCM)

### FUEL OIL CONSUMPTION OF MAIN ENGINE

D.F.O.C at NCR abt. 34.59 t/day

### CRUISING RANGE

abt. 12,400 NM

### NAVIGATION EQUIPMENT

Radars ( ARPA )  
Gyro Compass / Auto pilot  
Speed log (Single axis)  
DGPS Navigators

### TANK CAPACITIES

Cargo	abt.	55,000	m <sup>3</sup>
Heavy fuel oil	abt.	1,400	m <sup>3</sup>
Marine diesel oil	abt.	170	m <sup>3</sup>
Fresh water	abt.	400	m <sup>3</sup>
Ballast water	abt.	22,500	m <sup>3</sup>

### CARGO SEGREGATION

6 Seg.

### CARGO OIL PUMP

Type	Hyd. Driven Submerged.
Capacity	600 m <sup>3</sup> /h x 12 sets
	300 m <sup>3</sup> /h x 2 sets
	75 m <sup>3</sup> /h x 1 set